



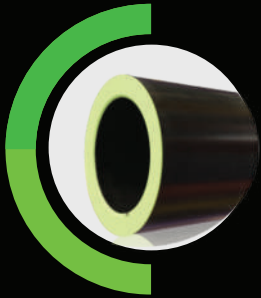
**TECH SLEEVES**

THE FUTURE IS NOW

# PRODUCT PORTFOLIO

The right sleeve for every job

[tech-sleeves.com](http://tech-sleeves.com)



### Ideal for:

All standard printing applications. The most efficient printing sleeve to get the job done.

## Tech Standard

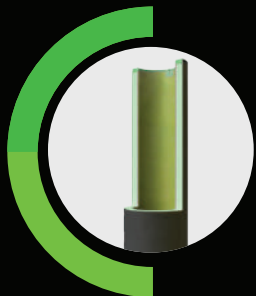
The gold standard in efficiency

This sleeve is the perfect balance of performance and cost-efficiency. It features:

- A lightweight build-up formula for easy handling.
- One glass fiber internal layer for stability.
- A 6 mm Tech Guard outer layer for enhanced durability.



1. Glass fiber base sleeve
2. Compressible layer
3. High performance foam layer
4. Glass fiber reinforcement layer
5. Tech Guard final layer



### Ideal for:

High-speed printing, complex jobs, and maximizing output on new presses.

## Tech Pro

Designed for high-speed & complex jobs

Engineered for demanding printing environments, the Tech Pro sleeve offers:

- Exceptional durability and stiffness for maximized print performance.
- Conductive properties for enhanced safety.
- Bounce mitigation for consistent quality at high speeds.
- 2 or 3 internal glass fiber layers for increased strength.
- A 6 mm Tech Guard outer layer for robust protection.



1. Glass fiber base sleeve
2. Compressible layer
3. High performance foam layer
4. Glass fiber reinforcement layer (1)
5. High performance foam layer
6. Glass fiber reinforcement layer (2)
7. Tech Guard final layer



### Ideal for:

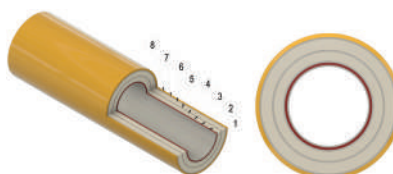
Unique print settings that require exceptional hardness and durability.

## Tech Classic

Built for unique print settings

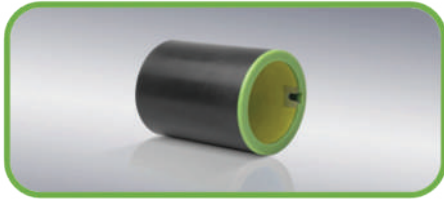
Tech Classic combines specialized design with optimal hardness, making it perfect for unique and specific print environments:

- Resin outer layer for maximum durability.
- 2 or 3 internal glass fiber layers for structural integrity.
- Yellow sleeve with green foam for easy identification.

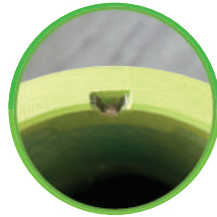


1. Glass fiber base sleeve
2. Compressible layer
3. Glass fiber reinforcement layer (1)
4. High performance foam layer
5. Glass fiber reinforcement layer (2)
6. High performance foam layer
7. Glass fiber reinforcement layer (3)
8. Vinyl ester resin outer layer

## Customization options for each version to suit your needs



Rubber ends for enhanced durability and protection.

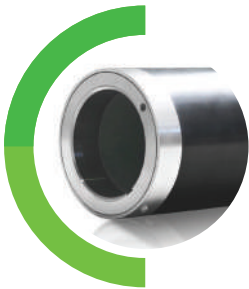


Metal notches for secure sleeve registration.



Customized colored ends for visual workflow management.

## Complete your setup with our range of adapters



### Mounting Adapters Tech Bridge

- **Base Layer:** Lightweight, stretchable, and durable without cracking.
- **Compressible Layer:** A high-rebound foam layer ensures a perfect fit with resilience.
- **High Performance Lightweight Foam Layer:** It contains a unique lightweight material optimized for stability, accuracy and wear-resistance.
- **Outer Surface Layer:** Vinyl-ester resin reinforced with fiberglass for excellent chemical and temperature resistance.



### Press Adapters Tech Carbon and Tech Carbon+

- **Precision Winding Technology:** Tailored laminate structure ensures optimal performance for any diameter or length.
- **Custom Universal Seal:** Prevents dirt and ink residue spray during mounting, enhancing operator safety and cleanliness.
- **Lead Edge Full Metal Ring:** Protects the front edge from repeated handling damage, ensuring longer durability and lifetime.

**Contact us!**  
[tech-sleeves.com](https://tech-sleeves.com)

H. Kamerlingh Onnesweg 2  
2408AW Alphen a/d Rijn  
The Netherlands  
+31 17 25 03 611  
[info@tech-sleeves.com](mailto:info@tech-sleeves.com)