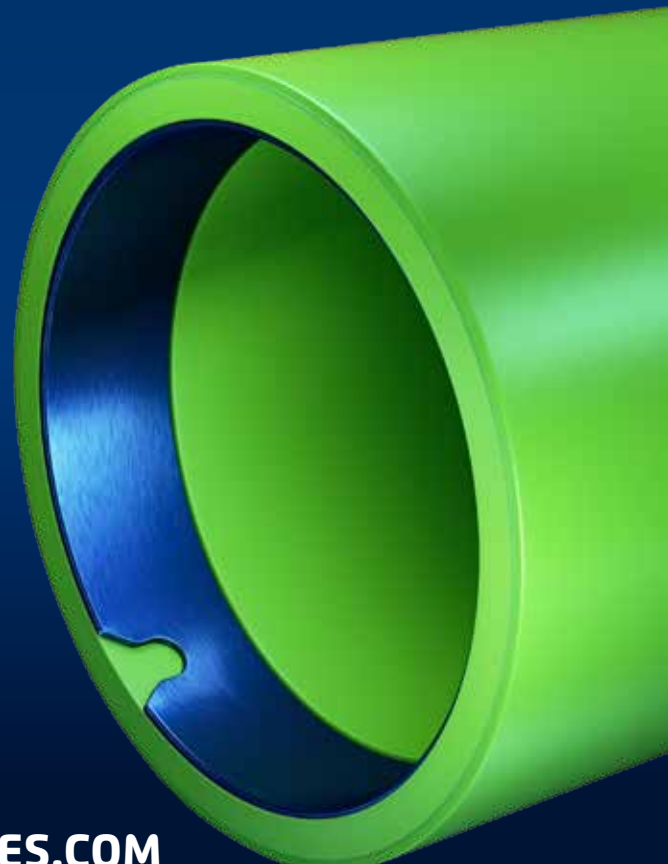
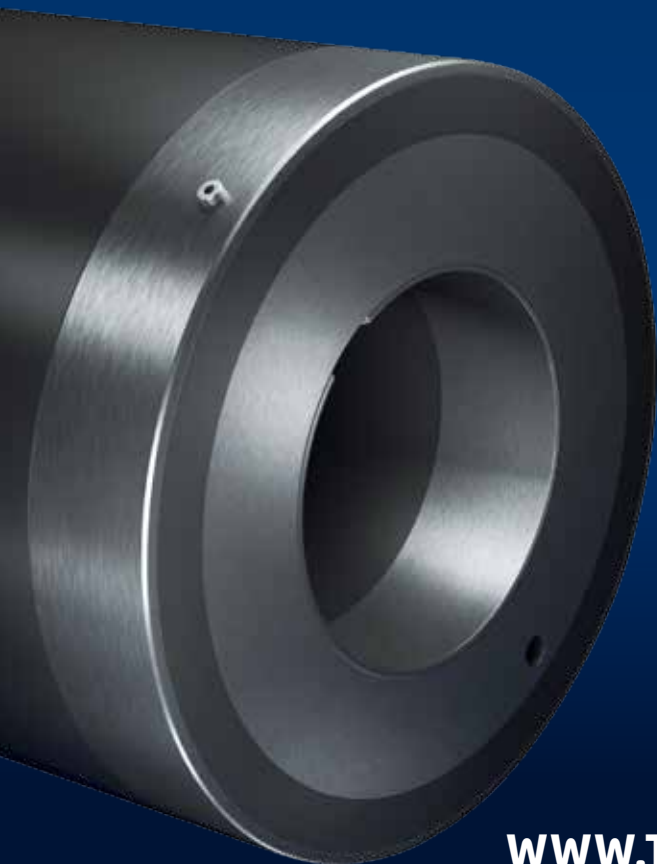


SLEEVE MANUAL



TECH SLEEVES

THE FUTURE IS NOW



WWW.TECH-SLEEVES.COM

THANK YOU FOR BUYING TECH SLEEVES®!

This user manual illustrates how to use and care for your sleeves.

Read the document carefully to get the best possible performance from your Tech Sleeves.

Do not hesitate to contact us, for any additional question.

GETTING STARTED

1 OPEN THE BOX

Open the sleeve box and take the sleeves out.



2 UNPACK THE SLEEVES

Remove the corrugated paperboard with care.



3 INSPECTION

Inspect the sleeves carefully to identify if any damage has been caused during the transportation.



4 WAIT FOR 24 HOURS

Allow the sleeves to rest for 24 hours after unpacking. This will help the sleeve to adapt to the temperature in the factory in order to ensure a perfect fit.



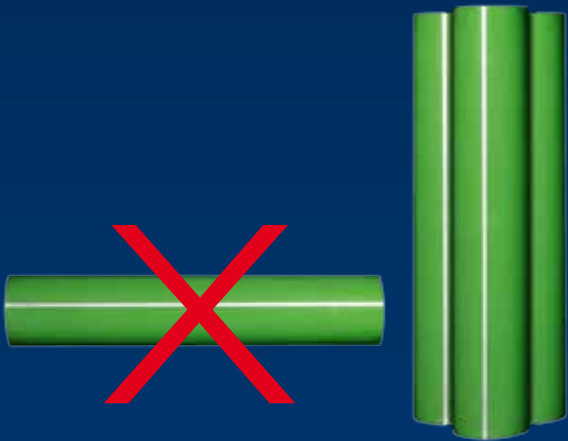


TECH SLEEVES

HOW TO STORE SLEEVES?

1 STORE THE SLEEVES STANDING UPRIGHT

Do not lay the sleeves horizontally, as this could cause deformation of the sleeve over time. Store in an up-right position. Even if the sleeves are shipped horizontally in the boxes, store them vertically.



2 STORE THE SLEEVES ON A FLOOR MAT

It prevents damage to the bottom of the sleeve.



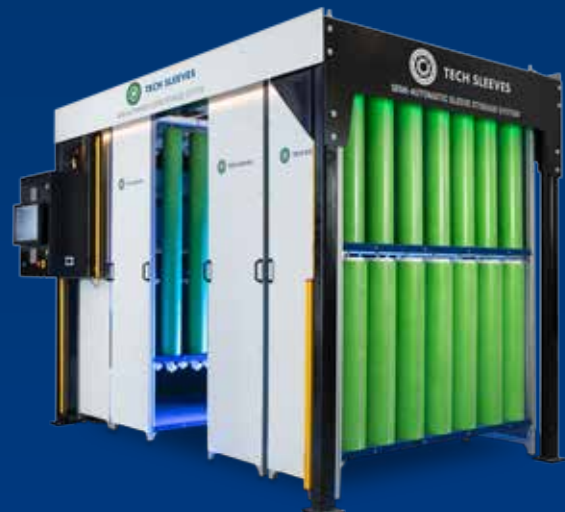
3 STORE AT A CONSISTENT TEMPERATURE AND HUMIDITY

Sleeves may age due to temperature fluctuations and/or humidity variations.



4 ORGANIZED STORAGE

A neat and organized storage will increase your productivity and prevent possible damage.



For more information visit www.tech-sleeves.com.

HOW TO MOUNT SLEEVES?

1 HANDLE THE SLEEVES WITH CARE

Dropping or mishandling a sleeve may damage it.



2 DON'T MOUNT TAPE AND PLATES UNTIL THE SLEEVE IS DRY

After cleaning the sleeve, make sure it is completely dry before mounting tape and plates on it. Using a wet sleeve may cause the tape to not stick properly, resulting in sub-standard prints.



3 DON'T FORCE THE SLEEVE

Forcing the sleeve on the mandrel can cause the sleeve to hit the alignment notch, damaging either the alignment pin or the sleeve.



4 USE COMPRESSED DRY AIR (CDA)

CDA forms a cushion to mount and demount the sleeves smoothly from the mandrel or cylinder.



5 WAIT 20 SECONDS

It takes approximately 20 seconds for the air between the sleeve and the mandrel to escape after mounting the sleeve. Waiting 20 seconds will ensure the sleeve is properly mounted on the mandrel or cylinder.



HOW TO DEMOUNT THE TAPE AND PLATE OFF THE SLEEVE?

1 SPREAD FORCE EQUALLY

Spread equal force along the width of the plate or tape while demounting it.



2 DO NOT USE EXCESSIVE PRESSURE ON THE EDGES

Avoid putting excessive pressure towards the edges. This may cause damage.



3 CLEAN THE SLEEVE

Don't let the ink stay on the sleeve for a long duration. Clean the sleeve immediately after usage and store it.



4 USE DEMOUNTER

Using a Demounter is the most efficient and safe way of removing plates and tape from a sleeve.



For more information visit www.tech-sleeves.com.

HOW TO CLEAN THE SLEEVES?

1 CHEMICAL USE

Any chemical commonly used in the flexographic industry can be used to clean the Tech Sleeves® as they have supreme chemical resistance.



2 DRYING

Mounting tape and plate on a wet sleeve may lead to substandard prints as the tape may not stick properly. Therefore, allow the sleeves to dry after cleaning it.



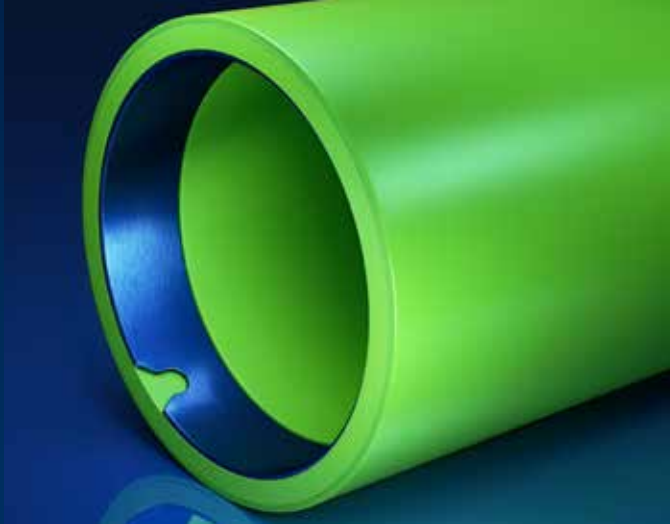
3 CLEAN BEFORE AND AFTER USAGE

Dust prevents proper adhesion of the tape. To avoid that the sleeve will stand with ink residue for a long duration, clean your sleeves immediately after use. This will increase the lifespan of your sleeve.

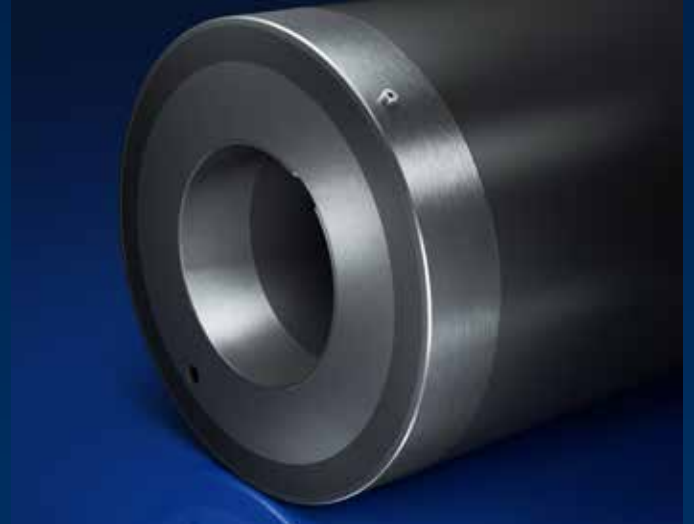


PRODUCT PORTFOLIO

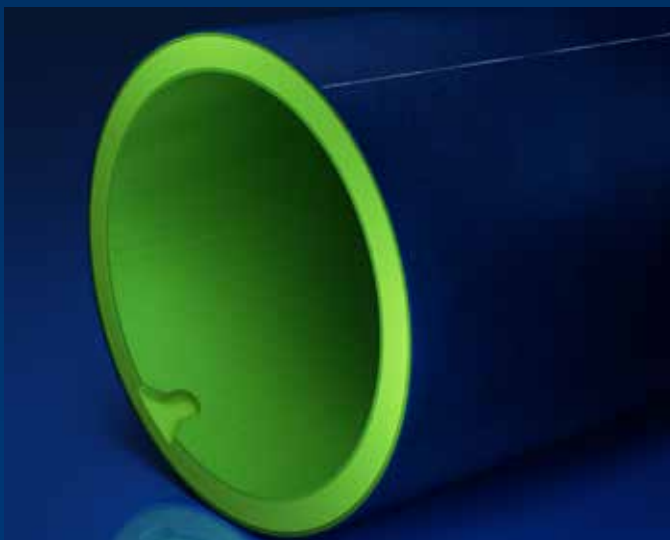
SLEEVES AND BRIDGES



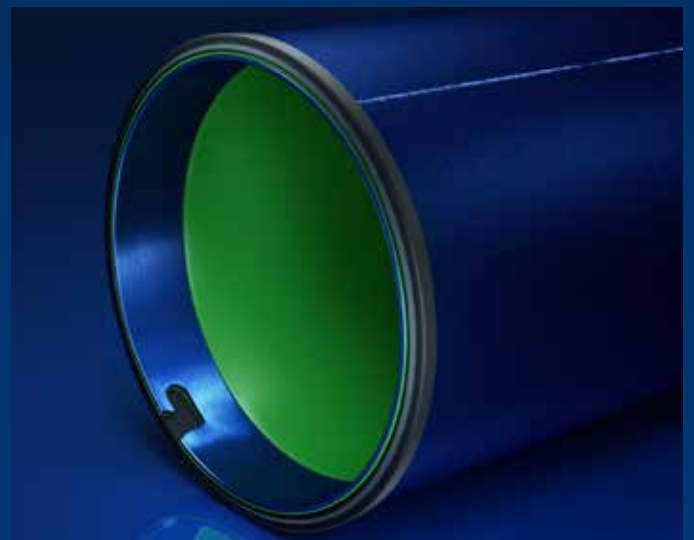
TECH SLEEVE® HARD



TECH BRIDGE® HARD



TECH SLEEVE® SOFT



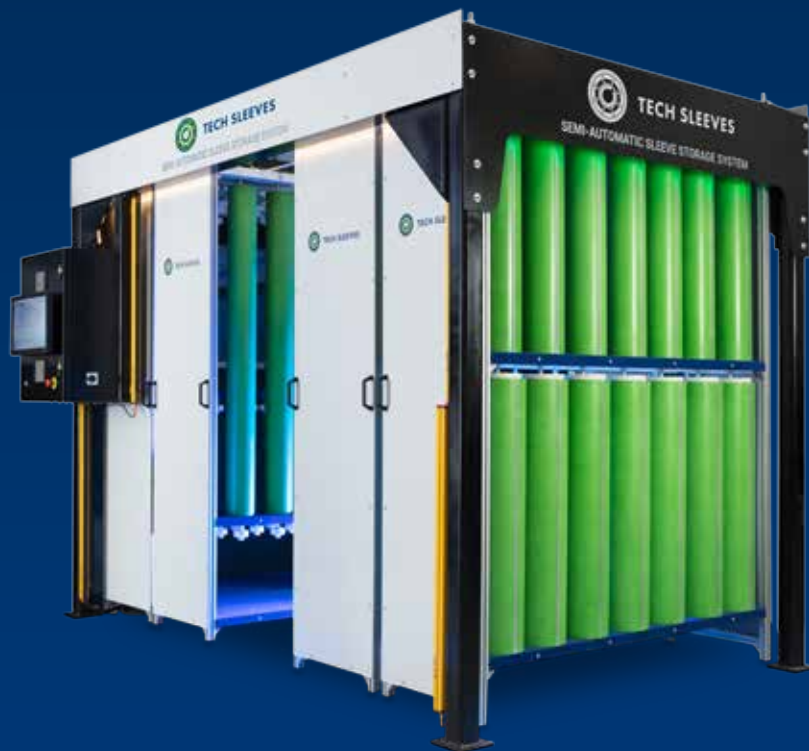
TECH BRIDGE® SOFT

SUPPORTING EQUIPMENT

**TIR
MEASUREMENT
SYSTEM**



**SLEEVE
STORAGE
SYSTEM**



DEMOUNTER





WORLDWIDE CUSTOMIZED SLEEVE SOLUTIONS

Tech Sleeves offers Bridge and Plate Sleeves for the global flexographic printing industry. We strive to enhance the printing quality and overall efficiency through a combination of experience and innovation.



TECH SLEEVES
THE FUTURE IS NOW

H. Kamerlingh Onnesweg 2, 2408 AW Alphen aan den Rijn
P.O. Box 252, 2400 AG Alphen aan den Rijn, The Netherlands

T 0031 172 503611 | F 0031 172 437919 | E info@tech-sleeves.com

WWW.TECH-SLEEVES.COM



@techSleeves